

The Project Memories
of
The Glasgow Rap Chamber



Konrad Kołodziej

Project Introduction (week 1)

(18.01.21)

For an introduction our tutors prepared a series of presentations about their unit's manifestos, as in this semester we could choose our group and tutor with the most suitable manifesto.



UNIT 1 JOHN BARR
IF ARCHITECTURE IS THE ANSWER,
WHAT IS THE QUESTION?



UNIT 2 GORDON FLEMING
PASSION FOR THE CITY



UNIT 3 MELANIE HAY
NEW LIFE FOR OLD BUILDINGS



UNIT 4 MARCIN NYKAZA
DISCONNECTED CITY



UNIT 5 VAS PIYASENA
IN THE MIDST OF CHAOS



UNIT 6 NICK ROBERTS
THE HIDDEN CITY



UNIT 7 CHRIS STEWART
TOWNHEAD BIOPHILIA



UNIT 8 DEREK HILL
THE PERFORMANCE FACTORY



UNIT 9 CHRIS MALCOLM
PRECEDENT, NARRATIVE +
METAPHOR IN THE DESIGN PROCESS

UNIT BASED DESIGN STUDIO TUTOR TEAM

ARCHITECTURE DESIGN STUDIES 3B
TO PLAY: AN UNDER-GRADUATE THESIS
UNIT ALLOCATION
MONDAY 20 JANUARY 2020

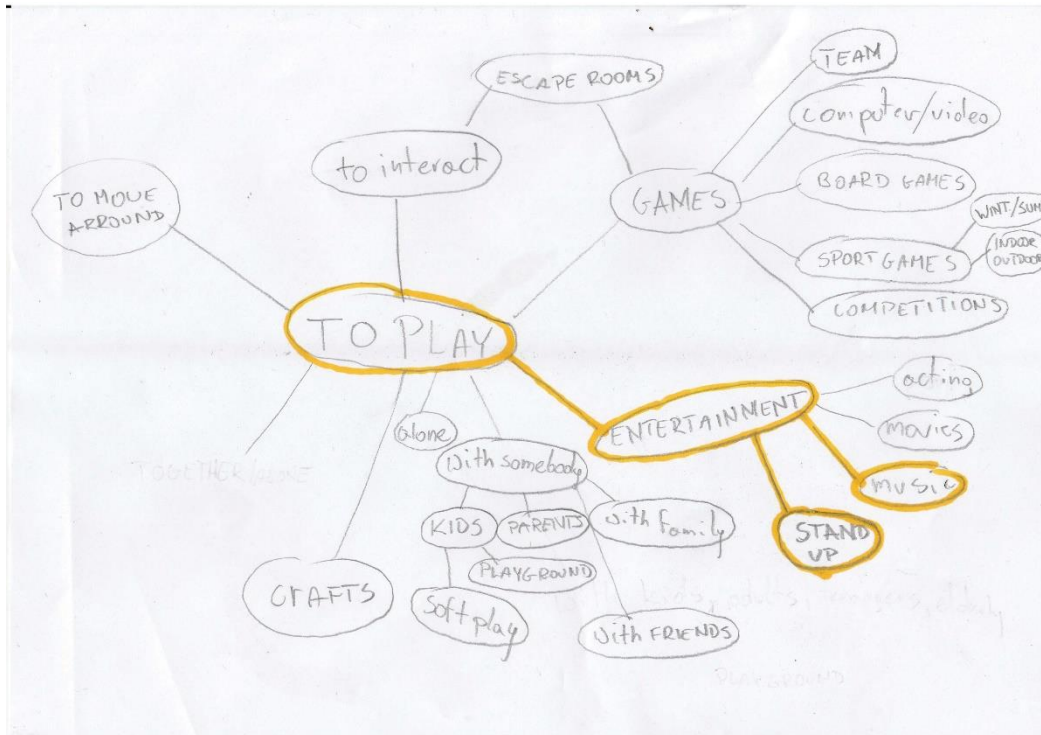
STUDENT	UNIT 1	UNIT 2	UNIT 3	UNIT 4	UNIT 5	UNIT 6	UNIT 7	UNIT 8
JOHN BARR								
GORDON FLEMING								
MELANIE HAY								
MARCIN NYKAZA								
VAS PIYASENA								
NICK ROBERTS								
CHRIS STEWART								
DEREK HILL								
CHRIS MALCOLM								
CHRIS ZERO PLAY								

UNIT ALLOCATION (2020)

Research + Analysis (week 2)

Finding appropriate meaning of words TO PLAY/TO PERFORM

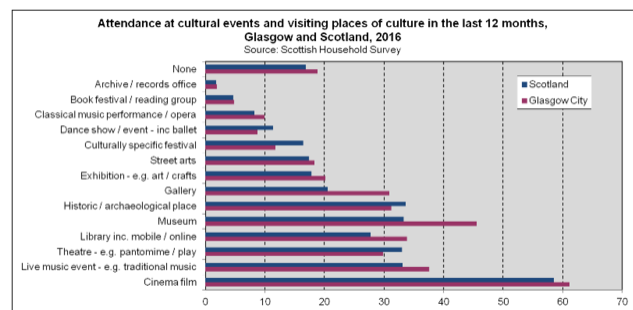
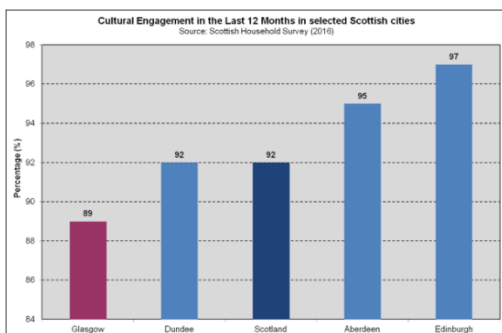
Mind maps helped me understand what activities I can accommodate in the building.



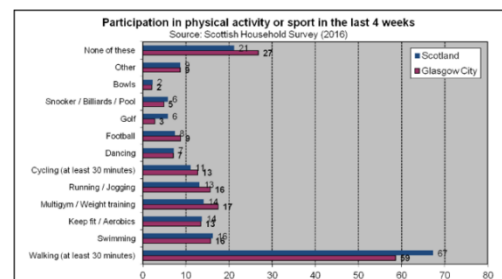
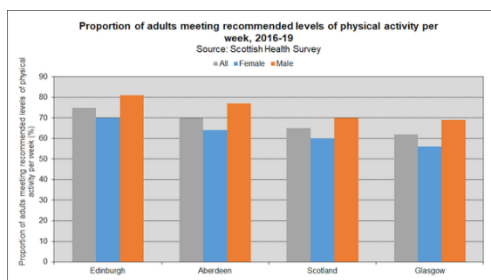
Research + Analysis (week 2)

Finding the problems of local community

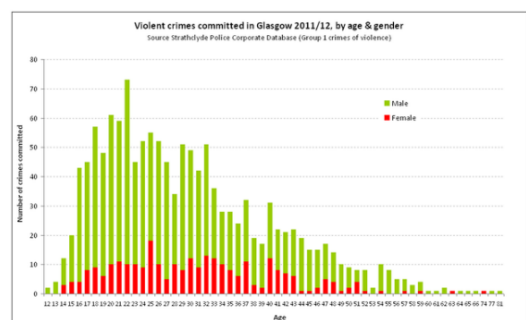
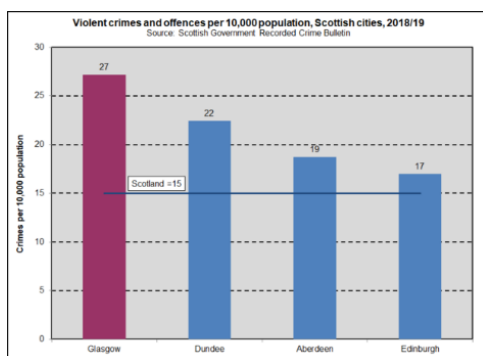
For better understanding of the problems of local community, I found the statistics for Glasgow about cultural engagement, physical activity and violent crimes.



Cultural Engagement in Glasgow



Physical activity in Glasgow

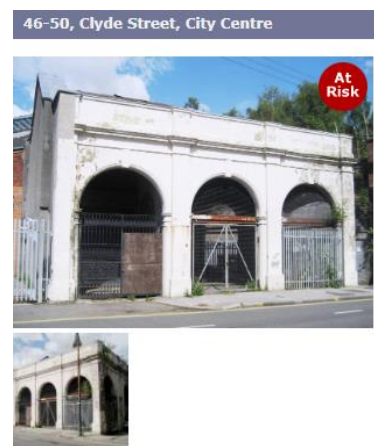
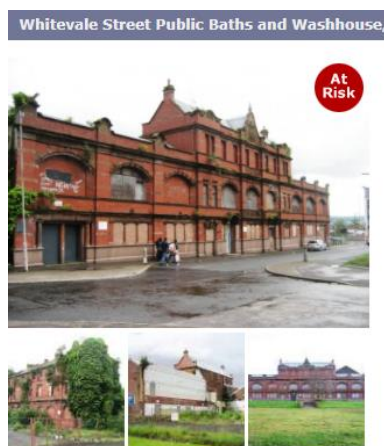


Crime rate in Glasgow

Research + Analysis (week 3)

Finding appropriate existing building for the design

To find the appropriate building I did some research on the website *Building at Risk Register for Scotland*, unfortunately the one on Argyle Street seemed to have too much noise pollution. My second idea was Baths and Washhouse but location was too far away from the city centre. I liked the building on Clyde Street but the building was too small to accommodate wanted form of performance. Finally I reminded myself about abandoned Glasgow Botanic Railway Station located in a lively area near the University of Glasgow.

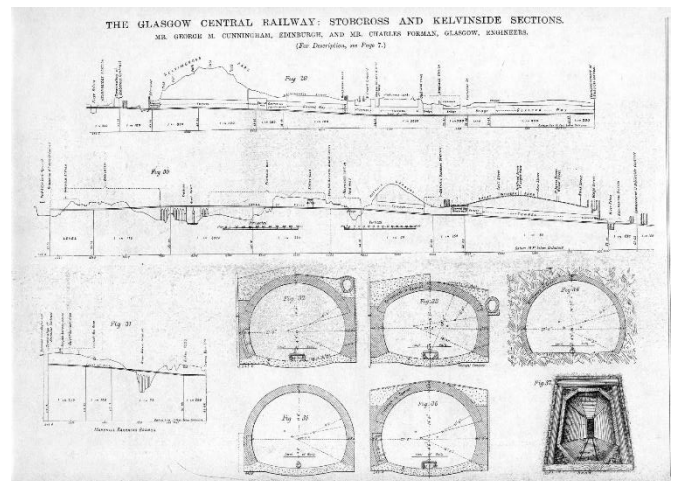
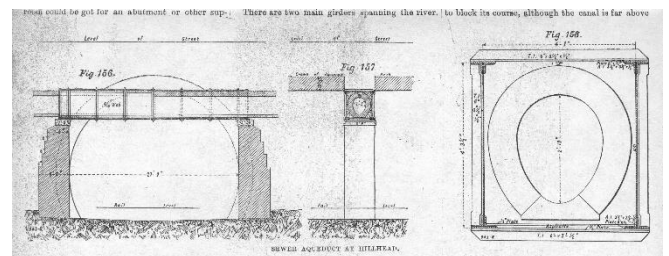
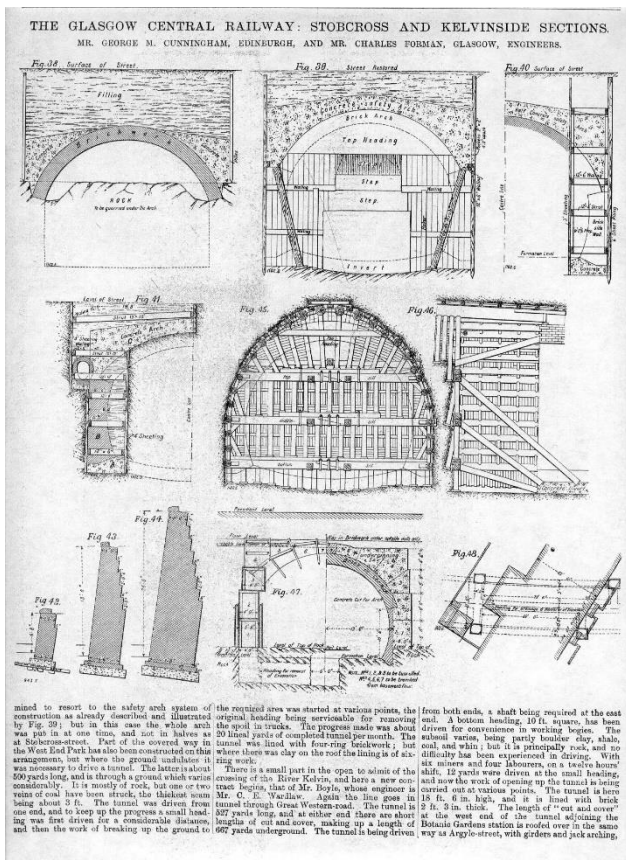


Buildings at Risk
Register *for* Scotland

Research + Analysis (week 3)

Gathering information about Glasgow Botanic Railway Station

As I could not access the site because it is fenced and locked, I decided to contact the person who has visited the space. *Gcat* is a nickname of an urban explorer who publishes his photographs of visited buildings on his website creating a great database about forgotten structures. *Gcat* provided me with the answers, a 3D model (which was not as accurate as I could wish but it was still helpful) and some technical drawings of this particular railway line.



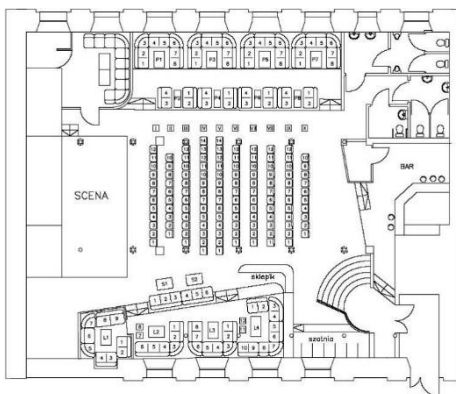
Research + Analysis (week 3)
Gathering information about
Glasgow Botanic Railway Station



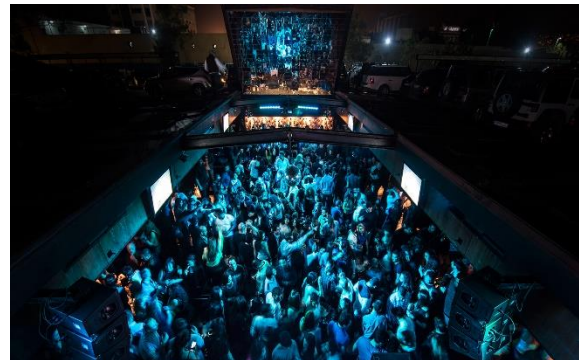
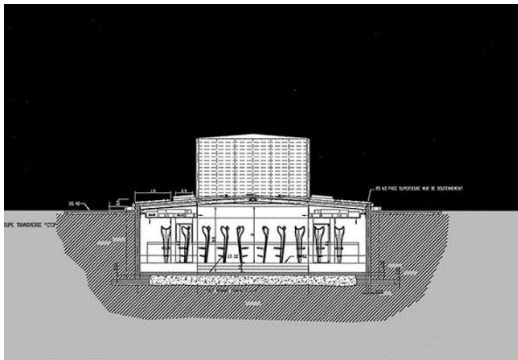
Research + Analysis (week 3) Finding Precedents

To find a good precedent I decided to do some research of buildings which also provide performance spaces.

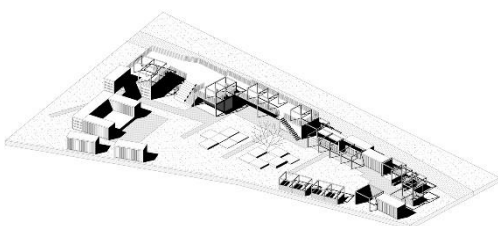
Rudeboy Club, Bielsko-Biała, Poland



B018 Bunker, Beirut, Lebanon



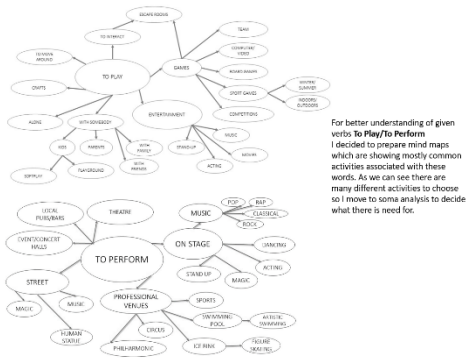
Kontenerart19, Poznań, Poland



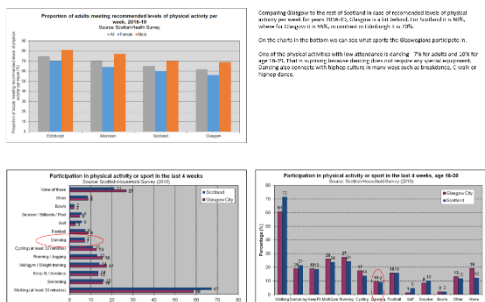
Research + Analysis (week 4)

Internal Review-Research (08.02.21)

Generally presentation went well, however there was a need to prepare one more page, which would be informing us about hip-hop culture.



Physical activity in Glasgow

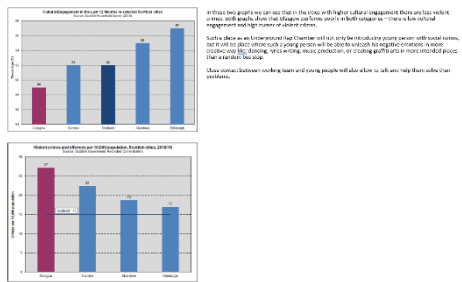


Botanic Gardens Railway Station

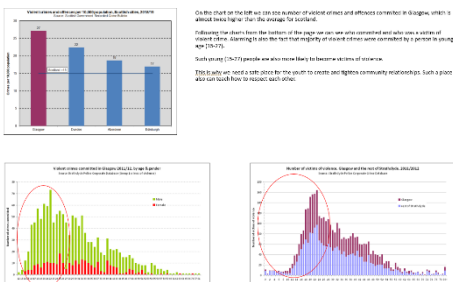
Location: Kelvinhall
Original Company: Glasgow Central Railway
Freight grouping: Calsonian Railway



Violent Crimes and Culture what in common?



Violent Crimes in Glasgow



Culture in Glasgow



Hip Hop Culture

Born in New York City in late 70s, Hip Hop culture is now a worldwide phenomenon. This complex culture comprises four elements: deejaying, rapping (a method of vocal delivery), graffiti painting, and breakdancing.

Hip hop has been used as a great unifier of diverse populations worldwide. It is built on values of social justice, peace, respect, self-worth, community, and having good fun. Hip hop started as a subculture but now it is a phenomenon of global culture crossing the cultural divide. Marginalised communities turn to hip hop because it resists exclusion or discrimination, and fights for equality. Many rappers rap about poverty and their struggles, which gives hope to youths who live in similar circumstances. Additionally hip hop has been playing an important role in promoting social and political awareness among the youth today. For example, rap music raises many social issues. Therefore it educates people. It is also a channel for people to speak freely and by doing so, it engages youth to become concerned and aware of these issues.



Design Development (week 5)

Spatial Needs

As the first step I focused on the size of the areas I need to design.

“According to the centre for educator development in Fine Arts, your dance studio must be able to accommodate 10 sqm per student. If the studio also serves as a performance space, it should be at least 465 sqm. A ceiling height 1.85-2.2 m is ideal.”

How much space for dance?

According to the Center for Educator Development in Fine Arts, your dance studio must be able to accommodate 100 sqft (~10m²) per student. If the studio also serves as a performance space, it should be at least 4,800-5000 sqft (~465 m²). A ceiling height (20-24ft) - (~1.85-2.23m) is ideal.

OR

Total space ~ 1500 sqm

Dance studio (30) = 300 m²
 Dance studio (15) = 450 sqm } 450 sqm

Stage max width 5x6m = 30 m²
 CARRIAGE 17.37 or 19.35 LENGTH
 3.24 width
 4m height

SEARCH! A ROOM

✓ Dance studio 30	300	SECURITY ROOM	1
✓ Dance studio 15	150	CLEANERS STORAGE	
✓ RECORD STUDIO	200	WOMEN TOILETS for workers	
✓ Stage + Audience	230	UTILITY ROOM	
✓ Dining Area		CLOAK ROOM	
✓ Bar		Tickets place	
✓ Toilets for guests		Entrance	
✓ Toilets for pupils (shower)			

STAFF (13 staff) + 200 guest

3 security guys outside
 3 security guys inside } during event

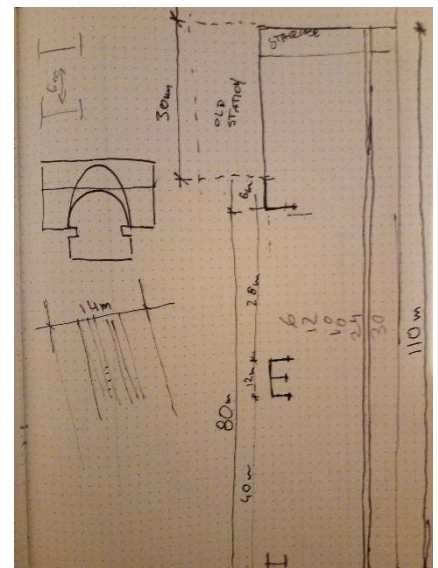
42 - tickets
 2 - cloak room
 3 cleaners

1 Security guy outside
 1 Security guy inside } casual day

1 cleaner
 2 Dance teachers
 1 person to run studio
 max 45 pupils
 1 Bar guy

7 staff + 45 people

bunker idea for roof → p. 150



SECURITY booth for 3

LOAD FACTORS

Standing spectator area	0.3
assembly area, bar, open air	0.5
standing spectator area	0.7
opening area, concourse	0.2
conference, staff, waiting, dining	0.2
meeting rooms, restaurant	0.2
shop, retail area	0.2
factory, museum	0.2
office	0.2

DANCE STUDIOS 10

Toilets for guests (200)

MALE
 2 wc up to 100 people
 5 urinals for 200 people
 3 wash basins

FEMALE
 2 wc for 200 women
 4 urinals
 7 wash basins

200 → 1000 sq ft
 1000 sq ft

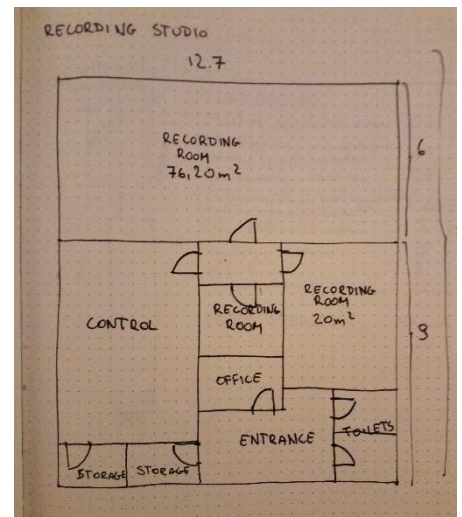
MALE
 2 wc
 3 urinals
 3 wash basin

FEMALE
 6 wc
 4 wash basin

2 wc
 2 urinals
 2 wash basin
 2 wc bigger
 2 urinals bigger
 2 wash basin

8.75 x 3

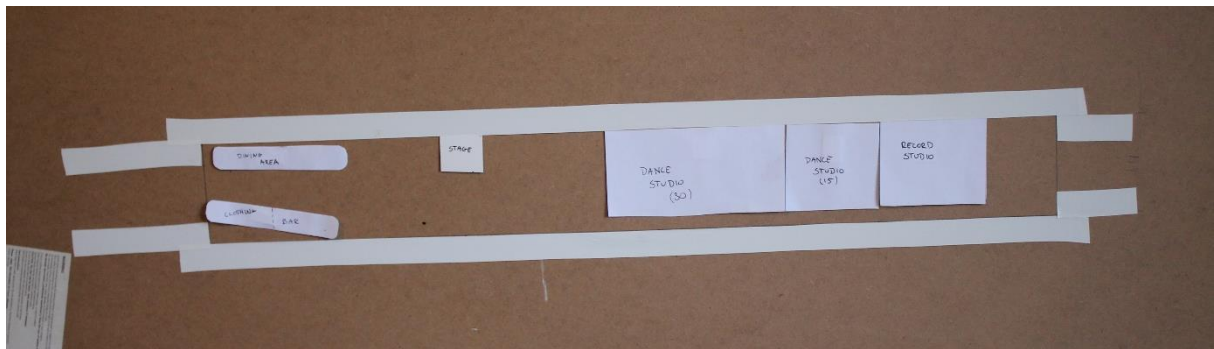
4m



Design Development (week 6)

Initial Idea

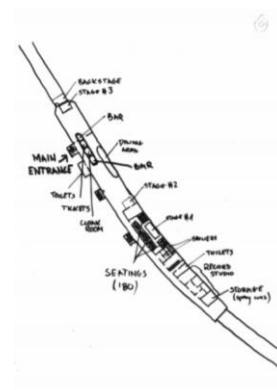
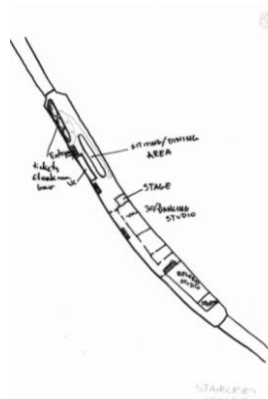
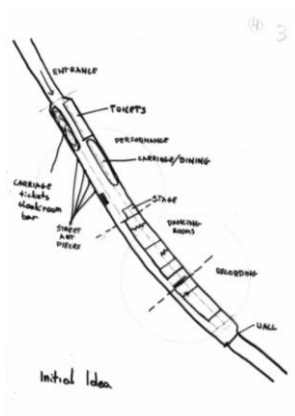
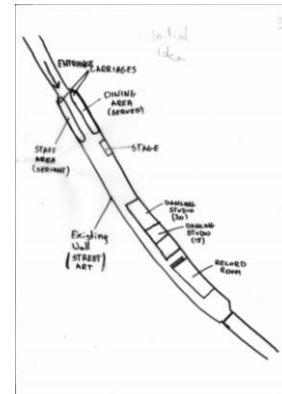
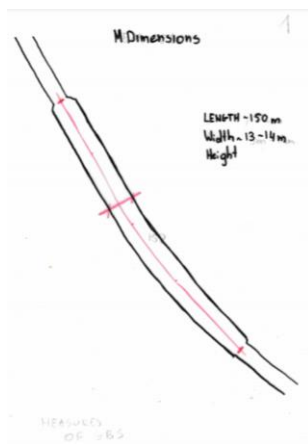
The initial idea for the building was created on simplified plan of the station. Measures were accurate but I skipped curved shape to make it simple during this first phase of the design, pararely I was preparing the digital 3D model of the existing structure for future use. Fistly I accomodated Dancing Studios, Recording Studio as well as Bar/Cloakroom and Ticket Office in looklike Caledonian Railway Carriage room, as well as Dining Area designed in a similar way. Additionally, you can see first attempts of placing the stage. Initially, I considered the main entrance to be through the tunnel, but fire safety regulations crossed out the idea, as well as I wanted focus on the design of the performance space.



Design Development (week 7)

Development process

Development process took me a long time and was difficult because of large disproportion between length and width of the station (150m long and 14 m wide). I divided the whole station into 3 main spaces: clubbing/exhibition area, training/performance area and recording/maintenance area. The whole structure needed twice more fire staircases than I expected, at the same time I also decided to move staircases outside the main body of the station, creating spacious corridor which can also serve as exhibition space.

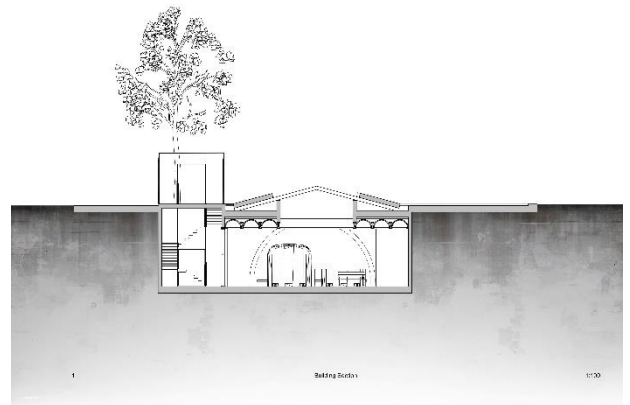
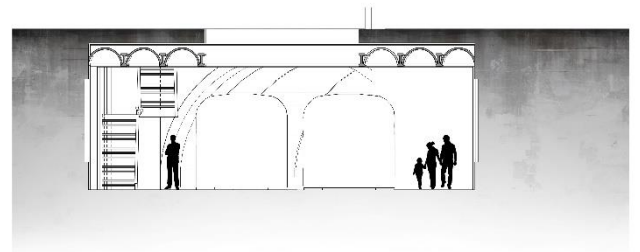
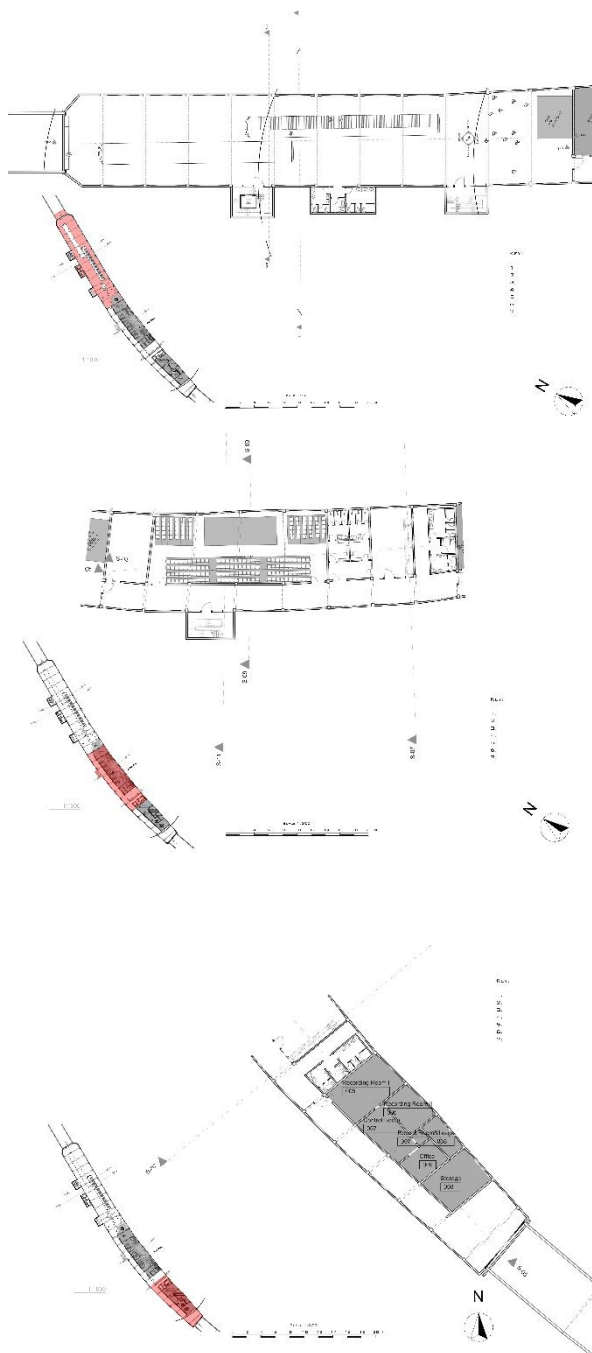


Design Development (week 8)

Internal Review

(08.03.21)

Main problem was the size of the station and the way of fitting the plans on wanted format. Firstly, I was trying to rotate the building to fit on the page. However, during the later stages of the desing process I decided to show the plans on 3 different pages with a northpoint top-orientated to make it clearer.



Detail Investigation (week 9)

Detail Investigation of carriage-like servant area

Since the beginning of the design process I was determined to connect the structure and emphasize its historical meaning for the city. For this purpose I wanted to bring to the project 2 Caledonian railway carriages, one as a servant (bar, cloakroom, ticket office) another as served space (dining area). The idea of bringing the real carriages from scrapyard, transportation, restoration and adaptation them to achieve wanted quality seemed to be creating more issues than solutions. Another problem was the length of the carriage (ca. 23 m) so I decided to use cellular gypsum blocks to create carriage-like shape which solved all problems connected with the previous idea of bringing real carriages.



Detail Investigation (week 10)

Designing the carriage made out of gypsum blocks gave me the best flexibility as I did not have to stick to given measures, but I could do it in the most suitable way for the space and achieve wanted result. Additionally, placing servant space in the middle gave proper circulation for the clubbing area, it also defined sizes of the dancefloors.

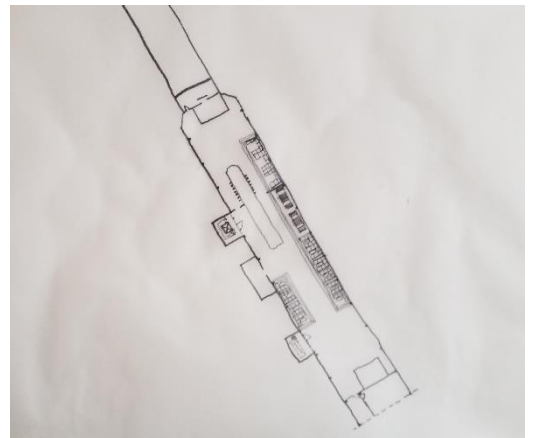
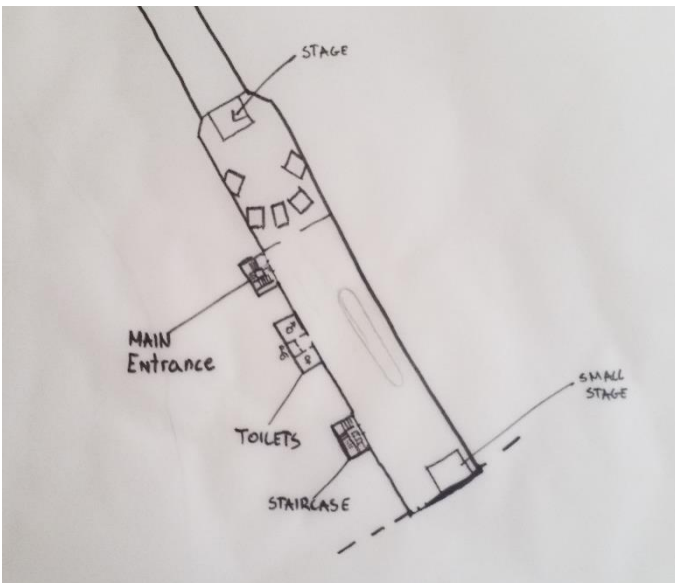
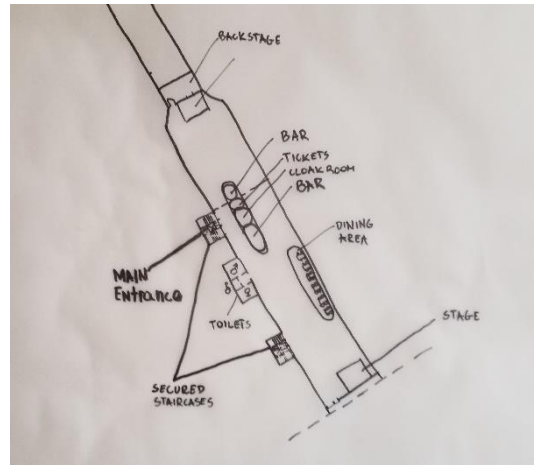
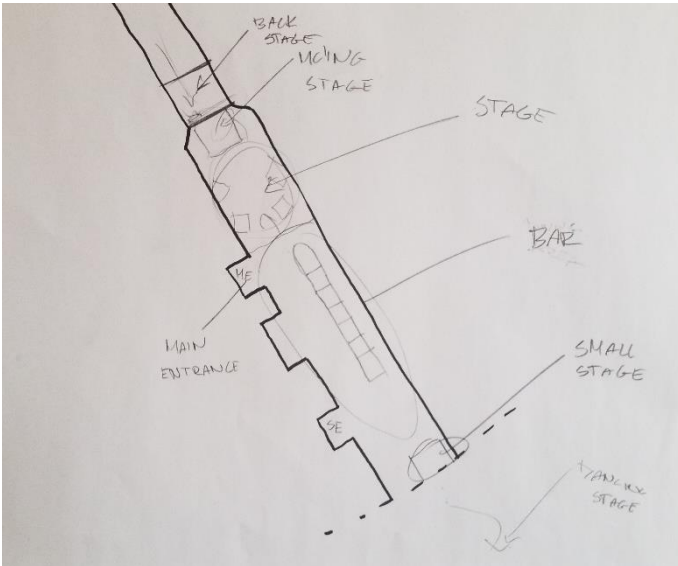
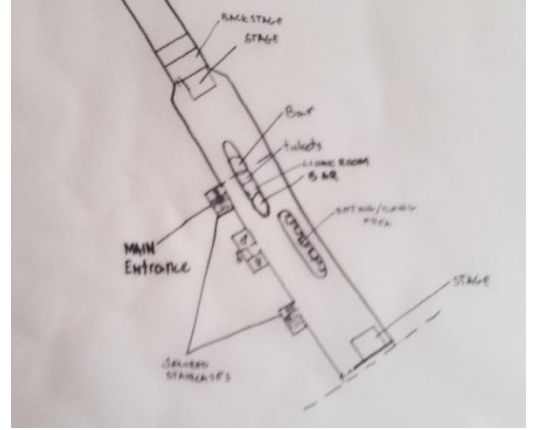
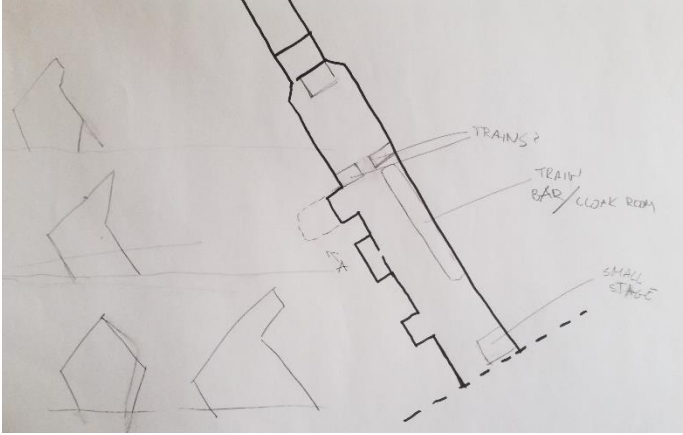


The new form of the carriage forced me to move back in the development process of bar area, which was poorly solved.



Detail Investigation (week 11)

Redesign of Bar/Clubbing Area



Conclusion

The design brought me a lot fun but I feel that I slowed down too much during the development stage due to feeling uncomfortable with the sizes of the existing structure. Then it was dragging the consequences through all the future stages of the design. However in each semester of studies I try to face weak sides of my designing skills and achieve the best result. I am happy with the functionality of the building and how it looks. Additionally, the spaces designed are solved in the way providing the best use of the areas. However, I feel that I could add more detail to achieve more and present the whole design in much better quality.